

Editors  
Jo and Paul Bradt  
6626 First St., NW  
Washington 12, D.C.

News of the  
WASHINGTON ROCK CLIMBERS

Founders  
Jan and Herb Conn  
Published Now & Then  
Five Cents Per Copy

Vol. 4, No. 3

September 3, 1947

#### OUR HOME FIELD

The Potomac Gorge, all within a dozen miles of the District line is our backyard climbing ground. The sketch above is traced from the U. S. Geological Survey map, "Washington and Vicinity." It is intended to show sufficient detail to identify large scale sketches of the region to be presented later. The rock is pre-Cambrian gneiss and schist worn smooth near the water line. Quartz intrusions exposed as veins or nubbles afford handholds and footholds in many places. The cliff heights mostly vary in height with the water level; indeed many vanish altogether once or twice a year at flood times.

#### UPS AND DOWNS

Mainly by Chris Scoredos

July 20, 1947. Sunday's trip was to the Virginia side of Great Falls. Those accounted for are: Bea Howell, Ted Shad, Helen Baker, Hazel Thacher, Nicholas DeLolly, John Meenehan, and Chris Scoredos. The main problem for the day was the Bird Nest Climb, which was successfully surmounted by Bea and Chris. Other climbs were also enjoyed.

July 27. John Meenehan, Jack Wilson, and companions unknown gave the Birds Nest Climb another workout. Looks like this climb is in danger of getting worn out.

August 3. At Carderock were assembled this Sunday Bea Howell, Helen Baker, Dolores Alley, Betty Alley, and Chris Scoredos. The well-known climbs were warmed up.

August 10. This Sunday's climbers were Eleanor Tatze, Jan Conn, Dolores Alley, Bill Welsh, John Meenehan, Martin Avignon Sr., John Fishburn, Andy Kauffman, Jack Wilson, and Chris Scoredos. It was Homecoming Week for some of us. Our original plans of proceeding to Herzog Island were changed by high water, and the climbing was enjoyed at Carderock. Jan and John Fishburn made a new ascent of a new face. Many other climbs were completed by everyone. An attack on the Jam Box was unsuccessful. (It can be done, even if we have to wait for Alan, Eric, and Peter.)



August 17. Sunday the group climbed and swam at Great Falls, Maryland. Those present were John B. Churchill, Elliott L. Amidon, Arnold Wexler, Chris Scoredos, Dolores and the two smaller Alleys. The swimming was super.

Aug. 24. A lovely hot, sunny day brought out a goodly number of enthusiastic climbers.

Donald Hubbard	Arnold Wexler	Andy Kauffman
Dolores Alley	Eleanor Tatge	Betty Kauffman
Leonard Bolz	John Churchill	Ted Schad
Chris Scoredos	Judson Greff	Helen Baker
Robert Hackman	Elliott Amidon	Jack Wilson
John Meenehan	Abby Hammack	Alice Wilson

While Don led beginners in the area of Juliet's Balcony, the greater part of the group climbed in the vicinity of the Corkscrew climb, in the Great Falls region of Virginia. In the afternoon part of the group worked downstream to Clark's Place. The climbing was on the torrid side, but Eleanor and Helen found the swimming just right. Dolores added a note of excitement to the end of the day by getting herself lost; at least, we couldn't find her!

Labor Day Weekend, 1947  
By Arnold Wexler and Donald Hubbard

Sterling Hendricks	Arnold Wexler	Don Hubbard
Betty Kauffman	Helen Baker	Bea Howell
Andy Kauffman	Clara Lee	Bill Welsh
Dolores Alley		Mary Neilan

Eleven people converged on Seneca Rock over the weekend for some interesting climbing. Sterling drove Betty, Andy, Dolores, and Arnold out on Saturday. Helen and Clara made the trip by bus, while Mary came down from Somerset by car. On Sunday, Bill arrived with Bea and Don. On Sunday two parties tackled the summit ridge of Seneca Rock. Arnold led Andy, Dolores and Mary while Betty spearheaded her team, which included Sterling, Helen, and Clara. The two parties followed the same route: up the southeast arrête from the gap for about 175 feet, then into the chimney on the South face to the balcony just below the crest line. From there they took to the ridge and went over the Old Man, the Cockscomb (via the pine tree) and onto the summit of the South Peak with time out to allow Arnold and Andy to take Mary, who took ill, off the Rock via the Old Ladies' Route. From the Summit they rappelled into the Gunsight and returned to camp along the trail on the West face. The climb started about 9 A.M., but it wasn't until 11:30 P.M. that everyone was back in camp. Coming off the South Peak was not completed until 10 P.M., and most of the party accomplished the rope-off in total darkness. Clara deserves a pat on the back for being a good sport. This was her first and only rock climbing experience and she behaved like a veteran.

On Monday, Helen joined Don's party, while Arnold and Andy recovered 19 pitons from the rock and the girls hiked over to Champe Rock.

As Bill Welsh eased his auto to a stop before the Post Office at Mouth-of-Seneca, an enthusiastic voice from a nearby car was explaining what happens to such positive persons; at that moment one-two-three and four animated dots appeared at the summit and moved along the skyline. With a yodel in their direction we hastily departed for the Needles of Nelson which Bea and Bill climbed as an appetizer for supper. At the end of a roped rappel in three stages from the base of the higher peak, we arrived among the brambles and briars in the dark and hurried back to the Yokum's for tea and a T-bone steak.

On Monday Helen Baker lead our group to the top of the South Peak via the Old Woman's Route and then to remind us that it was Labor Day, took us down to the Gryphon's Beak. Helen describes this climb as one with a 364-degree exposure and one degree devoted to rock to give the climber a sense of security. Bill was given the honor of making the rappel from the Beak to the Gun Sight Notch. On this he gave a neat performance of running along the East face to swing himself into the base of the gendarme. Three cigarettes, two quarts of water, one lunch and four Pepsi Colas later he was again ready for action.

that the South Peak of Seneca Rock had never been climbed. Just by way of emphasizing



## NEWS

Vacations are about over and we are hoping to be able to publish something on Betty and Andy Kauffmans' trip into the Battle Range and Sterling's, Arnold's, Donald's and Pete's trip into the Spillamacheen. Both groups of mountains are in British Columbia. Oz Heard, one of our subscribers and a member of the Mountain Club of Maryland was out in the Colorado Mountain No-Name Needles area this summer. How about some news, Oz? Eleanor Tatge visited Sally Chamberlin in Switzerland and has much to tell of her bicycling and her French Course at the University of Lausanne. Maybe she'll tell us a little about the Valais Alps in another UP ROPE. (P.S. Jo Bradt is now the proud possessor of a Swiss ice axe! Thereby hangs another tale. Ask Eleanor.) The busy editors wish to offer special thanks to Chris Scoredos for his faithful reporting of UPS AND DOWNS news this summer with unfailing regularity.

## LETTERS

From Laurence Curl:

"I went up to Ohio by a rather straight route and incidentally visited the Natural Tunnel, and was rather astounded as some of the cliffs there were very high (400 ft.?) and actually overhung a bit, and since they are limestone or mostly so, apparently rather on the unclimbable side. They ought to make a pretty good spot for a nice long free rappel tho!

"I spent one night at Winona, Minn., on the Mississippi River and was very much impressed by the numerous high cliffs thereabouts. I wonder if anybody ever climbed on them with ropes? In Montana I saw my first snow since early 1942, in particular in the Bear Tooth Mts. north of Yellowstone Park, also the Absarokas and numerous other high ranges. In Oregon I drove up to the Timberline Lodge on Mt. Hood and hiked up as far as I could in 1-1/2 hours, and came down a snowfield in about 20 minutes. I never knew one could make such tremendous time downhill in a snowfield, so this was quite an experience even if I didn't get to the top by 4,000 ft. or so. Later visited Crater Lake on a cloudy day, so couldn't see the famous color. I did scramble down to the lake in one place (no trail) and climbed back up as much as I could on the rocks. Much of it is a very steep talus slope and not much fun to go up. Later on I drove close to Mt. Shasta which is very impressive, and a few miles below saw the Castle Crags, which really made my fingers itch to get up on. They are a large group of assorted domes and pinnacles, apparently of granite or other hard rock but I couldn't be sure. I'll bet the Sierra Club has been there!

The lab. where I work is on the east side of San Francisco Bay, just a short distance below Berkeley. I got a room up in Berkeley near the University and within walking distance of Strawberry Canyon, a rather wild area. The Berkeley Hills are just above me and they are so steep and high (close to 2,000 feet) that they are still pretty wild. This is the first time I ever lived in a place where I can take a hike in the mts. starting on foot from my place of residence.

"One of the men in my section (Oliver Emerson) is a member of the Sierra Club who has done a lot of mountain climbing, some in the Alps. We are planning to do some climbing together soon.

"I hit here in a spell of balmy weather, but still cool enough to sleep under blankets at night. Heavens, what a relief from Florida! The worst thing about the place is the tremendous number of people here, and the heavy traffic. But you can't have everything and I am very thankful to have managed a transfer here.

Dr. Laurence Curl  
Enzyme Research Laboratory  
Western Regional Research Lab.  
Albany 6, California.

And from Dick Leonard:

"...I am anxious to get in touch with (Laurence Curl). We have certainly enjoyed immensely every single member of P.A.T.C. whom we have known. I have just had a fine letter from Art Lembeck, who is now

practicing on the coral cliffs of Guam. Jan and Herb Conn have been climbing a lot with us and Jan bears the reputation of being the finest woman climber we have known. I certainly hope that you and some others will be able to drive out some summer and do some climbing with us in Yosemite. We will do everything we can to help."

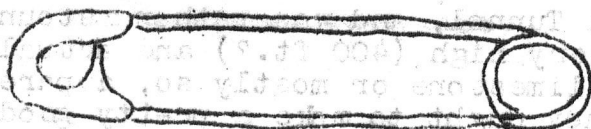
### THE WANDERING CONNS

Jan and Herb Conn were in town for a few days early in August before heading for Katahdin, Maine. They won't be right back, they explained, because they want to learn something about skiing during the coming winter.

The few climbers that could get around enjoyed their snapshots and tales about climbs on Yosemite's Lower Cathedral Spire, Royal Arches, Half Dome, Pulpit Rock, Washington Column, Cathedral Rocks, and Arrowhead, on Big Bend's Mule Ears and Lighthouse, on Boulder's Matron, and on rocks near San Francisco, including Devil's Slide. They were refused permission to climb Devil's Tower because of lack of documents proving their skill.

A delightful in-between stop was made climbing with the Iowa Mountaineers (sho' 'nuf rock climbers) with headquarters at Ames, Iowa. It is hoped that the inaccuracies and omissions in this report will be adequate to bring forth an authoritative article from the Conns.

### SAFETY PIN NEWS



The rock-climbing ranks have been increased by two new prospects:

Peter Irey Bradt, born July 26, 1947 to Jo and Paul Bradt, weight 81lbs. 2 oz., and  
Margaret Elaine Scott, born August 25, 1947, to Guinevere and Leo Scott, weight 3.64 kilograms.

### CHANGES OF ADDRESS

Lowell and Ellen Bennett now live at 1207 Noyes Drive, Silver Spring, Md.  
Fitzhugh and Geraldine Clark are now on Chestnut Street in Gaithersburg, Maryland.

Donald Hubbard is helping (so far) regularly with UP ROPE, and lives with the Editors at 6626 First Street, NW.

Steve Yurenka's address is

Room 324C, Graduate House  
Massachusetts Institute of Technology  
Cambridge 39, Mass.

Art and Vin Lembeck are on Guam where Art is instructing the natives in Chemistry. Their address is

Ch. Pharm. A. C. Lembeck, U.S.N.  
School of Med. Practitioners  
U.S. Naval Med. Center  
Guam, M.F., Navy 926  
F.P.O., San Francisco, California

### FOR SALE

Betty and Andy Kauffman have for sale 1 pair of 7EE L. L. Bean shoe packs (price \$3.00) and 1 pair of \$18 ski boots 7C or 7D. Both of these items are practically new.