

FOUNDED BY  
JAN AND HERB CONN

## NEWS OF THE P.A.T.C. MOUNTAINEERING COMMITTEE

1916 Sunderland Place N. W. Washington 6, D. C.

Vol. XIV - No. 16

June 1959

### KAUFFMAN TALK RECEIVED ENTHUSIASTICALLY —

An estimated 160 people were entertained and informed by Andy Kauffman's talk on May 26 in the District Building.

In his own inimitable style Andy took his rapt audience to the 26,470 foot top of Gasherbrum I or Hidden Peak. The account of the only American first ascent of an eight thousander was interestingly documented with Kodachromes which showed viewers vividly the parts played by Andy, Nick Clinch and each of the other members of the party - as well as providing a delightful climbers-eye view of some of the Earth's most inaccessible corners.

The show would have been enjoyable had a stranger given it, however, it was a particular pleasure to have Andy back with us.

### ACCIDENT REPORTS AVAILABLE

The American Alpine Club's 12th annual report of mountaineering accidents has recently been published and is available through Up Rope. The booklet describes 29 accidents in vivid detail and gives an analysis of each. A statistical breakdown of accidents is given by age, party size, experience, immediate and contributory cause and geographic region. The booklet also describes the capability gradations established by the Appalachian Mountain Club to deal with leadership qualifications within their organization. Reports are available from the Editor or from the Business Manager for twenty-five cents.

### GADGETS

### AND THINGS

Since I saw Chuck Wilts testing his knife blade pitons on California's Mt. Pacifico and read his subsequent article in the Sierra Club Bulletin, 1954\*, I have hoped that someone would produce this item commercially. Because the operation involves grinding and tempering a very strong chrome-molybdenum alloy steel, the manufacture is more critical than that of the conventional larger wrought iron or low carbon steel pitons. After all, men's lives may depend on the quality control in this postage stamp-sized device. We are therefore fortunate that Ropy Holubar has used his engineering approach to the problem and now markets the piton at a reasonable price. Cracks less than 1/32" wide in good rock may be used with the knife blade piton, and in poor rock can often provide better protection than conventional sizes because of less disturbance of rock structure.

Another new item, again by Holubar, is a carabiner brake bar for the Bedayn durable carabiner. The brake bar for steel carabiners has been available though in the U.S. as sort of a curiosity, for quite a while. It is an improvement over the crossed carabiners, or the piton hammer crossed carabiner described in Mariner's Neuzeitliche Bergrettungstechnik, an important reference for mountain rescue teams. By use of the carabiner brake bar, one can control descent of a helpless person or of a litter from the bottom or top of a rappel or overhang. Also, an active climber can rappel without con-

(see page two)



## GADGETS

tact of the rope with leg or shoulder. Personally, I favor limiting the use of the brake bar to rescue techniques. An uninjured climber, using minimum shoulder protection and two carabiners snapped into a fiaper sling can make a faster smoother rappel without the need of carrying this extra item. But this dural bar of Holubar does put much less strain on the rappel rope than the Swiss steel bar because of the formers greater diameter, which does not bend the rope as sharply.

In food preparation developments, there are a number of frying pans with folding handles on the market, but most of them are too "foldable". If one fails to take special care every time the handle may release at the wrong instant and a hard-to-replace meal ends up on the ground for the coneys. The Smilie Co., 536 Mission St. San Francisco 5, California has both steel and aluminum frying pans with excellent folding handles, one which permits flipping flapjacks in safety - - of course, you can still miss the pan. The aluminum pan is rather light gauge but only weighs 6 oz. in the 8" diameter; steel pans are 10oz. in the 8" diameter and 18oz in the 9" diameter.

Recreational Equipment, Inc. (The Co-op), has dehydrated granulated dates to make breakfast cereals more appealing; Smilie has this, too. The former also packages a mixture of the date granules with pecans and rasins calling the mixture, "Energy", as a snack item. The co-op also carries a well finished cast aluminum tent peg in three lengths, 6 $\frac{1}{2}$ "; 1 $\frac{1}{2}$ oz., 9"; 2oz., and 12"; 3 $\frac{1}{2}$ oz. The cross section is a "Y" shape which seems to give a good grip on dirt. Only the 6" stake is recommended unless the stake is pulled straight up. Banging back and forth broke both longer stakes in the middle. \*\*

The pitons and carabiner brake bar are available, in addition to a wide assortment of other hardware, dehydrated foods and camping items for sale at PATC Headquarters.

- Art Lembeck

\* Reprinted in Belaying The Leader, Sierra Club, 1956 for sale at PATC Headquarters.

\*\* In frozen ground, even the short ones are easy to break -Ed.

# UPS and DOWNS

## May 3 - - Carderock

Don Hubbard	Bill Plimmer
Jan Conn	Jerry Nettles
Alan Talbert	Dave Harvey
Robt. Beardsley	Sayre and Mother
Bart Hague	Rodman
Laura Bingham	Bob Duffy
Bob Mole	Art Lembeck
M.E. Fitzpatrick	Grayson Harding
Adams Familt	Fred Chamberlain
Jane Showacre	John Patton
Cecil Cullander	Dot Patton
and family	Jay Edwards
Bevin Hewitt	Ann Elisher
Pat Hughes	Bob Gerhardt
Larry Matarrese	Karl Edler
and family	John R. Long
Sally Prins	Betty Johnson
A. Hope Wirak	Chris Scorredos
Paul Damon	Bob Nelson

## May 10 - - Little Stoney Man

After a lot of indecision at HJ's as to just where we would go (the weather being bad as it was - clouds in the sky) Alan came to our rescue; made the decision and off we went to Stoney Man. Chuck surprised every one by winning the Shenandoah Grand Prix. He arrived a good 5 minutes ahead of anyone else. Those attending were:

Adams Family	Alvin Macuber
Bob Beardsley	Carol Mayer
Laura Bingham	Bob Mole
Jack Doolan	Pete Peterson
M.E. Fitzpatrick	John Reed
Jake Haun	Don Roodyn
Don Hubbard	Alan Talbert
Diana Hesling	Carmen Torrey
Betty Johnson	Chuck Wettling
Peg Kiester	Arnold Waxler
Art Lembeck	Worrell Family.

## May 17 - - Great Falls, Va.

Adams Family	Dave Horwitz
Art Anderson	Alan Talbert
Mal & Kay Blinn	Dick Long
Jack Doolan	Bob Mole
M.E. Fitzpatrick	Jane Showacre
Christy Hansen	Peggy Smuck
Hugh Hansen	Pete Peterson



ODDS-N-ENDS

**WHO** LOST A CLIMBING ROPE ???  
 Claim same from Jake Haun.  
 It's badly beaten about the ends but  
 has very neat standard Boy Scout Whipp-  
 ings.

\* \* \* \* \*

**WHEN** do you get your Up Rope?  
 It would be a great help to  
 the Business Manager to know the date  
 local and distant subscribers receive  
 their copies. We are considering First  
 Class Mailing for some or all of our  
 subscribers.

\* \* \* \* \*

**FUNDAMENTALS OF ROCK**  
**CLIMBING** is still available through  
Up Rope. This excellent reference is  
 published by the M.I.T. Outing Club  
 and sells for one\$. See the Editor or  
 Business Manager or send One Buck to  
Up Rope.

\* \* \* \* \*

THE SHENANDOAH AREA COULCIL, Boy Scouts  
 of America has invited the climbers to  
 camp at Rock Enon anytime we desire.  
 After August 1, when camp closes, cabins  
 will be available for our use. Before  
 Aug. 1 - only tent space and waterfront  
 facilities. A few of us have seen these  
 rocks and they are most impressive.

\* \* \* \* \*

**GARBAGE** should be carried home  
 from all club shelters  
 from now on. Labor is no longer available  
 to empty trash cans - and critters have  
 dug up and scattered that which was bur-  
 ried - - therefore the new policy. Can  
 pits will be closed.

\* \* \* \* \*

WE KNOW YOU'LL NEVER DO IT - but we're  
 optimists and we'll try anyway. Can any-  
 one make any suggestions for the improve-  
 ment of Up Rope. Give us a few minutes of  
 your thinking about what you would like  
 to see printed here.

May 17 - continued

Betty Johnson	Carmen Torrey
Art Lembeck	Chuck Wettling
George Yntema	Worrells

Asunny spring day seems to bring out  
 climbers - - even climbing climbers. Twas  
 such a day and everyone climbed. Betty  
 pushed up the reverse chimney with her us-  
 ual moans. Jack and Hal finally overcame  
 Romeo's Ladder and were very smug until  
 Carmen showed them how it should be done.  
 Jake made an excellent lead on the Birds  
 Nest although his comments enroute indic-  
 ated no great joy. Art Lembeck coached the  
 double rope operation from below. Bobby and  
 Johnnie had best watch out for their Gal.  
 Chris looks like a challenger. A good day  
 - - Oh spring in May!

- Kay Blinn

May 24 - - Thurmont, Maryland

Adams Family	Stan Schofer
Art Andraitis	Alan Talbert
Laura Bingham	Jane Showacre
Betty Johnson	Carmen Torrey
Carol Mayer	Chuck Wettling
Bob Mole	The Worrells
Ruth Johnson	George Yntema.

The little balance climb in the Wolf's Head  
 area provided an interesting challenge in  
 speed for Art and Bob M. You have to hand  
 it to them, they certainly have patience!  
 Cousin Woof showed us how the difficult  
 side of the Wolf's Head should be done,  
 but in spite of this it was still a strug-  
 gle for almost every one.

The "lunch scroungers" were especially  
 happy when Kate brought out a cake for  
 Bob's birthday and shared it with everyone.  
 The day ended with a "cave" trip and a  
 snake hunt by the Adams boys. No luck.

\* \* \* \* \*

Up Rope needs a stencil cutter (obviously)  
 and a mimeograph. Anyone who is willing  
 do perform either of these functions reg-  
 ularly or occasionally will be happily  
 greeted by the Editor and Business Mgr.

\* \* \* \* \*

Editor: Betty Johnson - - 10005 Wood-  
 hill Rd., Bethesda 14, Md. EMpire 5-  
 0778.

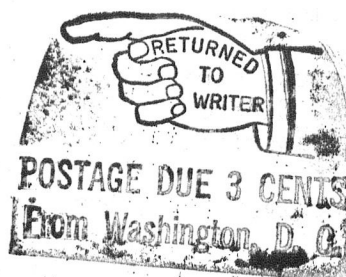
Business Mgr.: Jake Haun - - Woodatock  
 Va.

Price: One dollar for 12 issues. Please  
 make checks payable to Jacob Haun, Jr.  
 and send to Up Rope



UP ROPE  
1916 SUNDERLAND PLACE N.W.  
WASHINGTON 6, D.C.

RETURN POSTAGE GUARANTEED



Moved — Left No Address

1006

Mr. James Lane  
3420 16th St., N. W. #606  
Washington 10, D. C.

