

FOUNDED BY
JAN AND HERB CONN

NEWS OF THE P.A.T.C. MOUNTAINEERING SECTION

1718 N Street, N.W. Washington DC 20036

Volume 35, Number 9

September 1980

Publications

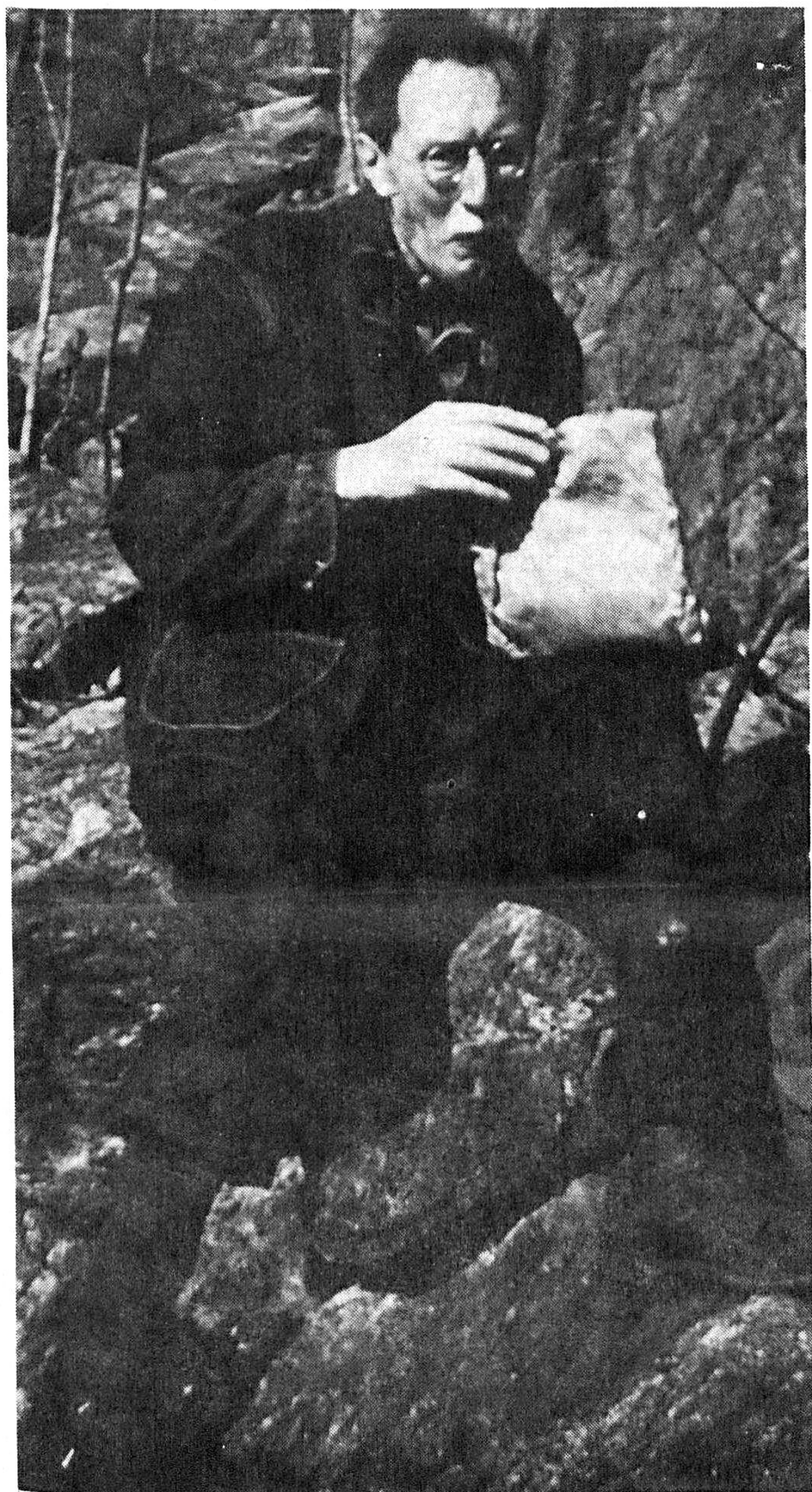
Climber's Guide to Carderock. John Forrest Gregory. S and S Printing, Inc., Chester, Vt., 1980. 56 pages, 5 line drawings, \$2.00

Gregory took the initiative to write a guide to one of the most accessible practice areas in the country. Whether he should have or shouldn't is moot. His Preface states his objectives as preserving climbing tradition, offering safety guidelines for top roping, and discussing environmental problems. He concludes, "I felt these considerations outweighed any risk of increased use 'caused' by the existence of a guide."

Given that many new climbers come to Carderock without benefit of the "old climber" system which imparted ethics and history, makes his effort worthwhile. Much information is delivered: names of climbs and locations. Some is incomplete: Tom Evans is the Evans of the Bolt Ladder, Dick Leonard is the Leonard of Lunacy. One misspelling: Sterling Hendricks. Criticism of the Park Service is heavy-handed: "...the only Park Service action in recent years (referring to parking lot to cliff path) has caused a marked deterioration of the area." Climber impact is unstated.

Perhaps more could have been written about how ratings came to be--what was the beer and chili consumption during discussions. Its strained to limit Incipient Crack's route to six inches on a side to rate it 5.9. However, a climb's nature remains, regardless of rating. As Gregory writes doing a 5.8 move "says little about your ability to do a 5.8 climb."

Sallie Greenwood



Gus Gambs, father of roped climbing in the Washington area, at Carderock ca. 1942.

Photo by Elizabeth Vos.

Hanging Around

COLORADO -- June

Bob Dunn and I drove to Colorado Springs. There we made a three pitch climb on the Pinnacle in North Cheyenne Canyon. The crumbly rock was protected by huge bolts placed by the US Army and used in their training.

Then we picked up my son Mark, drove up Pikes Peak, and practiced self-arrests in a snowfield. In Garden of the Gods we backed down from two starts up the beautiful red sandstone due to sparse protection.

Next we drove to Aspen and hiked to the base of the Maroon Bells. The following day we made camp below Cathedral Lake, also in the Elk Mountains. From there we climbed Cathedral Peak (13,943 feet). On snow from the lake to the summit ridge, we used ice axes and roped up for the steepest gully. The snow was in excellent condition and afforded easy glissades.

Following a scenic drive through Rocky Mountain National Park (with a good look at the Diamond on Longs Peak) Bob and I went to Boulder. There we climbed the First Flatiron by the North Arete. This pleasant 13-pitch climb took us from the plains to a peak which gave views of the Continental Divide and Longs Peak again. We discovered that the sales-

lady at Holubar who had told us there was a one-rope rap down the West Face was wrong. We needed three raps down the East Face, and a technical traverse.

We also climbed in Boulder Canyon, including two routes on Castle Rock (nice granite): Jacksons Wall (5.6) and Baileys Overhang (5.7). The guidebook says "the climbing gets easier after the overhang..." but it failed to say that the protection gets harder. So I found myself farther up a difficult pitch without effective protection than I care to repeat.

Great scenery and weather. We returned before the heat wave and spent the Fourth of July at the Gunks.

Don Barnett

SHAWANGUNKS -- July 4, 5, and 6

Amazing what the promise of a three-day trip to the Gunks will do for a trip leader: lots of people to track down, arrange rides, and try to coordinate for a potluck dinner. Problems arise in scheduling when the leader comes off a climb past the dinner hour. The dinner proceeded without her fortunately. May I say that service at the Plaza Diner is superb at 10 p.m.



UP ROPE

UP ROPE is the monthly newsletter of the Mountaineering Section (MS) of the Potomac Appalachian Trail Club (PATC) of Washington, D.C. Climbing articles, letters, and comments are welcome and should be addressed to Lin Murphy, 2314 N. Harrison Street, Arlington, Va. 22205. Deadline is the 20th of each month. Subscriptions for MS members are included in the dues. The annual subscription price for nonmembers is \$4. Current PATC members interested in receiving UP ROPE may obtain a subscription at no charge. MS members must belong to PATC. Applicants for membership and PATC members can join the MS by obtaining sponsorship from a current MS member. Send subscription and address changes to Mountaineering Section-Secretary, 1718 N Street, N.W., Washington, D.C. 20036.

PATC MOUNTAINEERING SECTION

Chairwoman	
Martha Hale	762-4769
Vice Chairman	
Don McIntyre	536-6122
Secretary	
Charlie Dorian	362-7523
Treasurer	
Ian Cruickshank	484-5108

UP ROPE STAFF

Editor	
Lin Murphy	533-8412
Circulation Manager	
Don Kocher	949-2239

MOUNTAINEERING SECTION ACTIVITIES

The MS holds meetings at PATC headquarters (1718 N Street, N.W., Washington, D.C.) the second Wednesday of each month except August. There is a brief business session followed by a slide show, film, or other form of entertainment. Sunday trips to nearby climbing areas and/or weekend trips to more distant areas are sponsored every weekend. Check the climber's calendar for scheduled trips.

Beginning and intermediate training are offered once a month. Anyone is welcome to participate in MS activities, although some restrictions may be placed on participation in club trips. The Sunday trips are usually to areas where there is a complete range of top rope climbs. However, we ask that you have some experience or training prior to the trip. The weekend trips are usually for lead climbers only, and you are expected to find your own climbing partner.

Much climbing by many people. Bill Fite showed up -- he's been out of town for awhile. Marjorie Prochaska and June Lehman came up -- the trip was Marjorie's first. A Gunks convert now, I think. The regulars were there, too: Martha Hale, Ian Cruickshank, James Eakin, Lin Murphy, Charlie Dorian, Nelson Lichtenstein, Jeff Brown, Jim Lowe, Brian Rennix, Mark Milligan (not so regular, but nice to have him back), Bill Hieronymus, Art Powell, Bob Ryan, John Raynor, Don Barnett, and Bob Dunn. Thanks to those of you who contributed to marking my birthday at the Plaza Diner. Shucks.

Sallie Greenwood

NELSON HOUSE -- July 19 and 20

A work trip to Nelson House took place on July 19-20. The roof was painted, the grass scythed, a new wooden front gate built and installed, and a loose board replaced high on the northwest side (5.3 Al). All this in sticky 100° heat. In the evening we revved in the swimming hole and then had a good potluck dinner. It is rumored that on Sunday most people swam or picked blueberries on Dolly Sods. It was 99° at 4:30 in Petersburg.

Participants were Ryan Pierson, Ian Cruickshank, Martha Hale, Marcie Logan, Arthur Karp, Bob McCracken, and Vivian Mendenhall (leader). Many thanks to all.

Mr. Nelson is trying to get the road graded, but so far the tractors that could do it are being used to cut hay. Grading will greatly improve the road when it's dry. It is passable now, but only if you go slowly. Please note that unimproved dirt roads aren't really supposed to be passable after significant rain, unless you have four-wheel drive, or chains and some luck.

Plans for rebuilding the front porch have been completed, and two work trips should be scheduled shortly for this project.

Vivian Mendenhall

ANNAPOLIS ROCKS -- August 10

Something for everybody: First two human flies from Baltimore, Ken Hood and Don Benson, made a playground out of the huge ceiling. Then James Eakin, Art Powell, Bob Berger, and Bill Hieronymus worked out on Pine Tree Crack.

Later, Don and Art climbed the large prow to the right of the ceiling. I rigged three easier climbs for ordinary mortals.

We just beat a huge thunderstorm whose deep rumblings had threatened us for an hour while hiking back to the cars.

Besides the above, Celine Soges, Marion Donoforio, Trina Kassler, Rich Jakucs, Joe Farness, and

Don Barnett

BELAY LEDGE

NEW MEMBERS, NEW ADDRESSES, OLD FRIENDS

Lyndon and Nancy Brown
533 Aberdeen, Apt. A
Kettering, Ohio 45413
(513)299-1469

Virginia H. Burns
1328 35th Street, N.W.
Washington, D.C. 20007
H: 333-1169

M. Margaret McKeown
1300 19th St., N.W., Apt. 408
Washington, D.C. 22036
H: 543-9068

David G. Ober
1422 27th Street, N.W.
Washington, D.C. 20007
H: 965-2066

Don Schaefer
SW 528 Cityview
Pullman, Washington 99163

CLIMBING IN PERU

The Iowa Mountaineers are planning a trip to the Cordillera Blanca in June of 1981. Their camp will be in the Quebrada Rurec. Additional information is available from John Ebert, 30 Prospect Place, Iowa City, Iowa 52240.

Climber's Calendar

September	10	MS meeting 8 p.m. PATC Headquarters	Andrew Wielochowski slide show
	13-14	Kline Gap, W. Va.*	Sallie Greenwood 533-8412
	14	Sugarloaf, Md. or Bull Run, Va.	Barbara Llewellyn 871-6197 or Martha Hale 762-4769
	20-21	Greenland Gap, W. Va.*	Neil Arsenault 997-9606
	21	Crescent Rocks, Va.	Ute Christoph 379-7664
	27-28	Seneca Rocks, W. Va.*	Martha Hale 762-4769
	28	Echo Rocks, Va.	John Christian 986-1243
October	5	Old Rag, Va.	James Eakin 598-6047
	8	MS meeting 8 p.m. PATC Headquarters	George Merriam: Mt. Cook slides
	11-13	Shawangunks, N.Y.*	Charlie Dorian 362-7523
	12	Great Falls, Md.	
	19	Hermitage, Pa. or Bull Run, Va.	Gary Roan (460-4837)
	26	Harpers Ferry, Md.*	
November	1-2	Seneca Rocks, W. Va.*	
	2	Great Falls, Va.	
	9	Annapolis Rocks, Md.	Bill Hieronymus 280-2667
	10	PATC Annual Dinner	
	12	MS Meeting, 8 p.m. PATC Headquarters	

For trip information call the leader or Martha Hale. Day trips are generally to top-roped climbing areas. Trips designated * are to lead climbing areas: Please arrange for your own climbing partner.

P.A.T.C

1718 N St NW 9
Washington, D. C. 20036

LIBRARY PATC
1718 N ST NW
WASH DC 20036

P

