

FOUNDED BY  
JAN AND HERB CONN

## NEWS OF THE P.A.T.C. MOUNTAINEERING SECTION

1718 N Street, N.W. Washington DC 20036

VOLUME 38, NUMBER 1

JANUARY 1983



**From the Editor's Chimney**

Ho Hum! The new year is upon us again, and it's resolution time. Here's mine:

1. Bring body weight down to an acceptable level (isn't this an annual resolution?).
2. Maintain climbing ability over the winter months. (No more having to get back in shape every spring.)
3. Put out UP ROPE on time each month (HA!!!).
4. Refrain from taking on any new projects.

How about you? I'd like to hear some resolutions -- hopefully on the humorous side -- that others have made. Hey... now there's an idea for someone: Think up some climbing related resolutions (not necessarily true) that are funny and will activate our readers' humor glands and send them in by January 20th. I will publish a list in February issue.

Ed.

\*\*\*\*\*  
 \* COVER: A beautiful view awaits those who climb \*  
 \* to top of Table Rock, even when the sky is over- \*  
 \* cast and haze limits visibility. Charlie Dorian \*  
 \* (left) and Ian Cruickshank take in the scenery \*  
 \* looking towards Shortoff Mountain (just barely \*  
 \* visible on the right edge of skyline). Story (a \*  
 \* trip report) on Page 4. Photo © Pete Grant. \*  
 \* \*\*\*\*\*

**Belay Ledge**

NOMINATIONS FOR  
 MOUNTAINEERING SECTION 1983 OFFICERS

The following is a revised list of nominees for Mountaineering Section officers (re December 1982 UP ROPE). Any nominee who does not desire to accept the nomination may withdraw his or her name from the list by calling Tom Russell, Nominating Committee Chairman, 301-869-8058; or by announcing such withdrawal at the January general meeting.

- CHAIRMAN: Charlie Dorian  
 \* James Eakin  
 Ron Greenberg  
 Joe Wagner
- VICE CHAIRMAN: Dave Atkinson  
 \* Charlie Dorian  
 James Eakin  
 Joe Wagner
- SECRETARY: \* Justine Carson  
 Barbara Llewellyn
- TREASURER: Dave Atkinson  
 \* Ed Cummings  
 Charlie Dorian  
 Joe Farness

\* = Incumbent

Tom Russell



MOUNTAINEERING SECTION ACTIVITIES

The MS holds meetings at PATC headquarters (1718 N Street, N.W., Washington, D.C.) the second Wednesday of each month except August. There is a brief business session followed by a slide show, film, or other type of entertainment. Sunday trips to nearby climbing areas are sponsored on most weekends. Check the Climber's Calendar on back of this publication for scheduled trips. Weekend and longer trips are also scheduled periodically. Sunday trips are usually to areas where there are a complete range of top rope climbs; however, we ask that each participant has had some training or experience prior to the trip. Weekend trips are usually for lead climbers and experienced seconds only, and everyone is responsible for finding his or her own climbing partner.

PATC MOUNTAINEERING SECTION

- |                |          |
|----------------|----------|
| Chairman       |          |
| James Eakin    | 587-6062 |
| Vice Chairman  |          |
| Charlie Dorian | 821-6801 |
| Secretary      |          |
| Justine Carson | 354-1389 |
| Treasurer      |          |
| Ed Cummings    | 332-6100 |

UP ROPE STAFF

- |                     |          |
|---------------------|----------|
| Editor              |          |
| Pete Grant          | 960-6033 |
| Circulation Manager |          |
| Joe Farness         | 265-5877 |

UP ROPE is the monthly newsletter of the Mountaineering Section (MS) of the Potomac Appalachian Trail Club (PATC) of Washington, DC. Climbing articles, letters, and comments are welcome and should be addressed to Editor, Up Rope, Potomac Appalachian Trail Club, 1718 N. Street, N.W., Washington, DC 20036. Deadline is the 20th of each month. Subscriptions for MS members are included in the dues. Annual subscription price for nonmembers is \$5. Current PATC members interested in receiving Up Rope may obtain a subscription at no charge. MS members must belong to PATC. Applicants for membership can join the MS by obtaining sponsorship from a current MS member. Send subscription and address changes to Mountaineering Section, P.A.T.C., 1718 N Street, N.W., Washington, D.C. 20036.

A REPORT FROM

AD HOC EXCURSION POLICY COMMITTEE

The Excursion Policy Committee; Tom Russell (Chairman), Ed Cummings, Charlie Dorian, Joe Farness, and Joe Wagner; has met and discussed what policy the Mountaineering Section (MS) should adopt concerning excursions (climbing trips and expeditions). The following is a draft of a proposed policy and it is open for discussion.

PATC Mountaineering Section Policy on Climbing and Expeditions\*

The Mountaineering Section of the Potomac Appalachian Trail Club encourages members and guests to organize local and distant climbing trips and expeditions.

Climbing trips and expeditions are announced in UP ROPE.

Local Climbing Trips

Section climbing trips to local areas are guided by MS Trip Leader Guidelines of 23 March 1977, as amended, and the official Welcome to the Section.

[Necessary changes: (1) Review Welcome brochure and update to agree with Guidelines; (2) Include in Guidelines, Para 3 "and must carry permission from adult for medical treatment." (3) Change in paragraph 6 "pick up the MS first aid ..... needed" to "make certain a first aid kit is available."]

Distant Area Trips and Expeditions

The Section supports bona fide mountaineering trips and expeditions to distant areas and may approve such activities by its members if so moved at a membership meeting, provided:

1. The group leader will explain goals, membership, itinerary, etc.
2. The Section will not assume any legal or financial responsibility for the group and group members will assume group and individual costs.
3. While acknowledging the right of the group and its leader to decide about the final composition of the group or expedition, any interested Section or PATC member may apply and most of the group should be Section or PATC members.
4. That group members recognize that they represent both the Section and PATC, and conduct themselves accordingly.
5. That donations of any kind received by the group as the result of Section approval become subject to open accounting to the Section membership. Disposal of any surplus from such donations, once group obligations have been discharged, must be able to meet challenges of propriety by Section and PATC.
6. The Section does not claim any portion of post-expedition profits from lectures, articles, books, etc.

Section members will appreciate to learn from group/expedition members about their travel and climbing experiences and lessons learned (UP ROPE, lectures, slide show).

\* We suggest that we use climbing and expeditions for excursion to denote the special character of our activities.

Tom Russell.

**Hanging Around**

ANNAPOLIS ROCKS, MD  
November 7, 1982

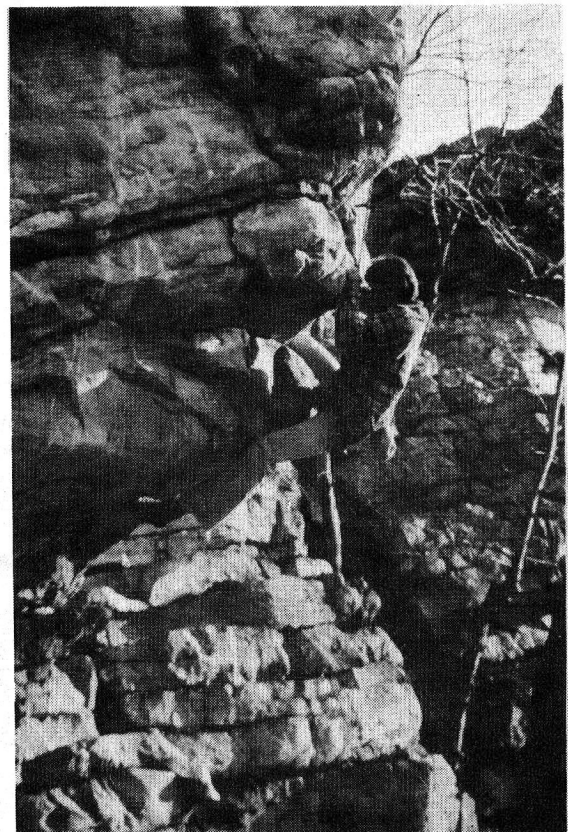
Thirteen climbers and two dogs showed up at Annapolis Rocks for one of those Indian Summer days of climbing. The most popular climb of the day was Pine Tree Crack, which Charlie proceeded to scale in a couple of minutes. The rest of us spent hours trying to perform a similar feat, unsuccessfully. Charlie was quite helpful, however, noting that one could easily measure one's progress as a climber by seeing how far one could get on this route. (Some of us seemed to regress as the day went on). One distinguished belayer was pulled off his stance by one of the more graceful falls of the day, thus providing a lesson on the desirability of a fixed anchor for the belayer.

The participants (most of whom made remarks by the end of the day about what a good climbing day it had been) were Don Benson, Steve Dempsey, Charlie Dorian, John Fohrell, Joe Farness, Cilla Holberton, Kevin Klasman, Vicky Linepacky, Peter Perenyi, Tom Russell, Bob Skinner, and Paul Torelli.

Ed Cummings

\* \* \* \* \*

BELOW: Steve Dempsey on the Prow at Annapolis Rocks, MD.  
Photo by Kevin Klasman.



**SOUTHERN ROCKS**  
November 25-28, 1982

In the back seat Cilla Holberton and Martha Hale were out of sight beneath layers of down, bags of food, and climbing gear. On the roof of the car three large sacks of gear swayed precariously. Driving, Charlie Dorian was surrounded by spare clothes, trash, and more food. Beside him, I had my feet propped on a rucksack and my left elbow resting on a six-pack. It was Thanksgiving eve and we were off for North Carolina and some "Southern Rock".

Seven hours later we found an unattended campground just off the Blue Ridge Parkway and I-77. The morning was clear and frosty. From the Parkway you could see twenty miles as we drove to Stone Mountain. In the parking lot we met Pete Grant and then walked the half-mile to the rocks. From the path the face is in full view. There are two conspicuous lines on the 600-foot granite wall. These are a pair of corners facing each other; the Great Arch (5.6) and No Alternative (5.7). The rest of the routes are pure friction with uncomfortably long runouts and bolt protection.

There are three 5.10's, eight 5.9's, four 5.8's, and two each 5.6's and 5.7's. On this occasion, in dry and sunny weather, Charlie, Cilla, and Pete did No Alternative (5.7) and Yardarm (5.8). Martha and I met a friendly climber from Roanoke who took us up Yardarm (5.8) and Grand Funk (5.9). We all found the climbing easy for the grade and not as intimidating as expected.

**BELOW:** Gary Beil prepares to pull one of the overhangs at Spitzbergen, MD. Photo © Pete Grant.



After a Thanksgiving dinner at an almost-empty restaurant, we camped near Lenoir, NC at another commercial campground (arrive late and leave early) and drove to Linville Gorge. Of the two possible approaches, the upper, or Gingercake Acres, road is better. The lower, or Fish Hatchery Road, approach is more suitable to four-wheel drive vehicles. (Ed note: Guess how we found out how poor the Fish Hatchery Road is for ordinary two-wheel drive vehicles!)

Having become lost due to a navigational boo-boo, we only did one climb Friday at Table Rock, which is a part of the Linville Gorge Wilderness Area. Martha, Pete, and Cilla did My Route (5.6), while Charlie and I did Second Stanza (5.8), a 1968 Chuck Sproull (PATC) route. Later in the day Patti and Jeff Brown with two friends arrived from West Virginia. Jeff and his friend did Peek-a-boo (5.5), finishing fashionably late (in the dark). Table Rock grows on you. Despite its broken, jungly appearance, there are great views, secure protection, and a wide choice of climbs in the middle (5.5-5.7) grades.

We had a delightful evening to sing songs in the empty campground but awoke Saturday to rain. Attempting the four mile hike to Shortoff Mountain in thick fog, we became lost and descended almost to the bottom of the gorge. With a bad weather forecast, Pete and the West Virginia contingent headed home, while the rest of us returned to Stone Mountain. Just off the Parkway above Stone Mountain we discovered a Country Club where there was good food and a Country & Western band. At midnight, damp with sweat from dancing in long-johns and soaked outside from rain, we camped at Stone. On Sunday, in more rain, we returned home.

N.B. Jess Tucker, our Stone Mountain partner, belongs to the Lynchburg Climbing and Mountaineering Club and welcomes contacts with PATC MS members. He suggested a joint Seneca trip or skiing this winter. His address is Rt 1, Box 51, Huddleston, VA 24404.

Ian Cruickshank

\* \* \* \* \*

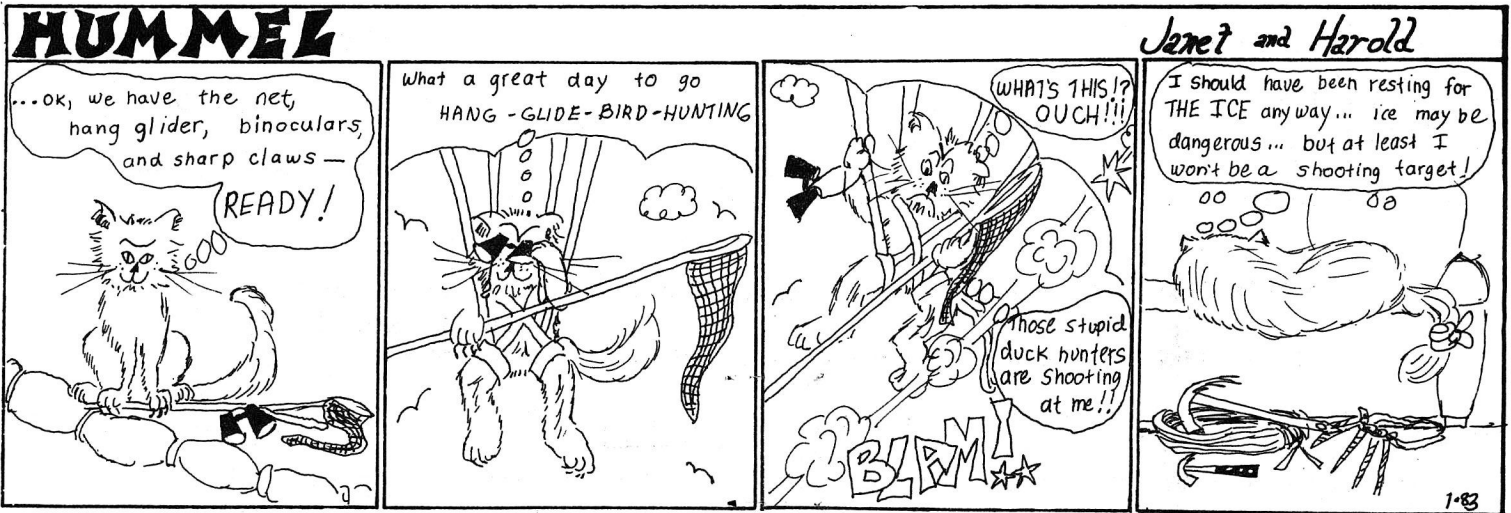
**CUPID'S BOWER, Dec 5, 1982**

It seems that this year the weather keeps on throwing curve balls at us -- maybe to add a little spice into our climbing life. This time, the heavy rains of a few days ago had raised the Potomac to a much higher level than normal, making access to Cupid's Bower (official name: Sherwin Island) difficult; or at least wet. The boulders we usually hop on to get across the little stream separating the island from mainland, were under water, and we were in no mood for getting our feet wet. Consequently, it was decided to go to Spitzbergen instead. This is another one of those seldomly visited climbing areas along the Potomac on Maryland side, about a half-mile up the Billygoat Trail.

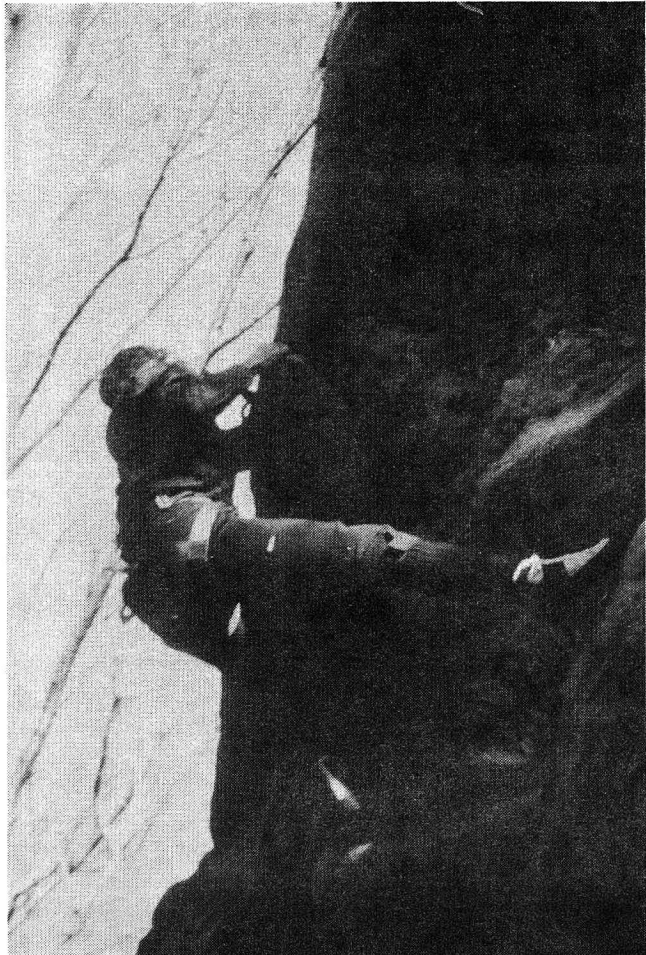
Only four of us brave ones showed up to climb in spite of a not-so-good weather forecast: Gary Beil, Nori Gessler, Pete Grant, and Paul Torelli. Our first climbs -- both of the face type -- proved to be real pieces of cake. To get a little more challenge into our efforts we climbed a little to one side or the other of the ropes, and found a route that seemed do-able, but after all day of trying, noone made it. There was some talk about going to Carderock to help out on the work that was being done there, but by the time we took down the ropes, it was too late.

Pete Grant

\* \* \* \* \*



BELOW: Charlie Dorian on the left side of The Prow at Annapolis Rocks, MD. Photo by Kevin Klasman.



### From Other Peaks

#### MOUNTAINEERING CAMPS WITH THE ALPINE CLUB OF CANADA

The Alpine Club of Canada is accepting non-member bookings for their 1983 mountaineering camps. Here are some excerpts from their brochure:

**GENERAL MOUNTAINEERING CAMP:** Farnham Creek, July 23 to August 13 (3 weeks). An area offering many climbs of varying difficulties and challenges on rock, snow, and ice. Seven peaks in excess of 3350 m (11000') including Mt Farnham, 3457 m (11342') and a number of lesser peaks. Limited to 48 paying people per week. Bookings accepted on a per week basis.

**LEADERSHIP TRAINING WEEK:** Women Mountaineers, July 30 to August 6. Maximum of eight participants. Those interested should write a short resume and send along with their names and addresses to the club manager.

**TRAINING WEEK:** Clubhouse - Columbia Icefield, July 16-30 (2 weeks). Basic rock, snow, and aice instruction for the beginner or as a refresher for those returning to climbing.

Firm applications for all camps must be accompanied by a non-refundable \$50.00 deposit. Non-members will be required to pay a \$40.00 registration fee (which may be used to join the Club). Prices for all summer camps will be available in mid-February, 1983. For further information, contact:

The Alpine Club of Canada  
Box 1026  
Banff, Alberta

\*\*\*\*\*  
 \*  
 \* NOTICE: This may be your last UP ROPE, at least for a \*  
 \* while!!!! (If you haven't paid your membership dues or \*  
 \* renewed your non-member subscription, that is). The \*  
 \* mailing list is being reviewed this month and all who \*  
 \* haven't paid up will be removed from the list. We all \*  
 \* know there's no such thing as a free lunch ... now it \*  
 \* looks like thre'll be no such thing as a free UP ROPE. \*  
 \*  
 \*\*\*\*\*

CLIMBER'S CALENDAR

Jan 1-2	* TBA (Ice or rock)	Paul Torelli	299-8039
Jan 9	Crescent Rocks	James Eakin	598-6047
Jan 12	** January Meeting	PATC Headquarters, 8:00 P.M.	
Jan 15-16	* Ice near Elkins, WV	Pete Grant	960-6033

For trip information, call the leader or Charlie Dorian (821-6801). Day trips are to top-rope climbing areas. Weekend trips (designated by \*) are to lead climbing areas -- please arrange for your own climbing partner.

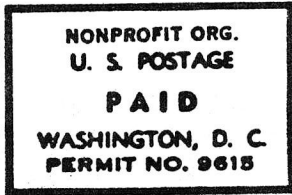
\*\* Election of MS officers for 1983. Meeting begins 8:00 P.M. sharp.

Ice climbing trips are normally organized on an impromptu basis, depending on weather and availability of ice. We have, however, scheduled two such trips in January; a time of year when ice can be expected unless we get hit by a heat wave. If the weather is too warm for ice work, the trip on 15-16 weekend will be to Seneca Rocks, WV. To inquire about unscheduled ice climbing trips, contact Charlie Dorian or James Eakin.

Trip leaders needed. Please contact Charlie Dorian if you would like to volunteer.

*Up Rope*

1718 N St N W  
Washington, D. C. 20036



DATED MATTER